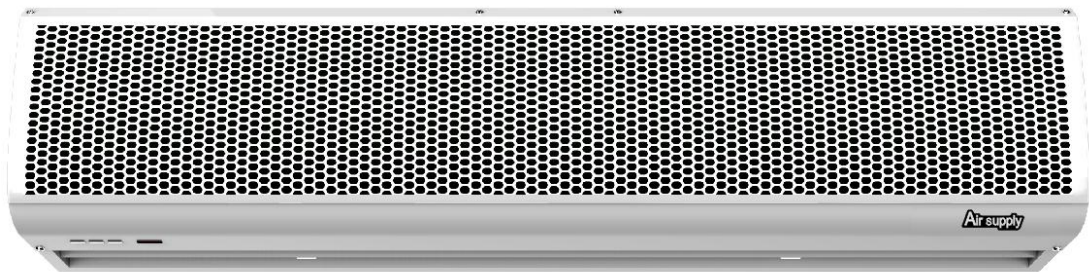


AIR CURTAINS

INSTALLATION MANUAL

Air supply



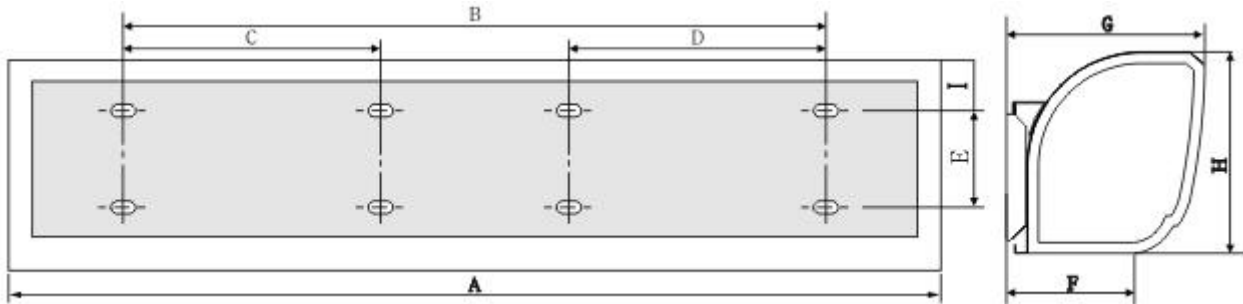
Basic plus 90cm
Basic plus 90cm BLK
Basic plus 100cm
Basic plus 100cm BLK
Basic plus 120cm
Basic plus 120cm BLK
Basic plus 150cm
Basic plus 150cm BLK
Basic plus 180cm
Basic plus 180cm BLK
Basic plus 200cm
Basic plus 200cm BLK

**Thanks for purchasing this Air Curtain,
Please read these instructions carefully before use.**

1. PRODUCT INTRODUCTION

As one of the new top-class products for modern decoration, air curtain is also matched with the air-conditioner. And it is installed at the entrances of supermarket, theater, meeting room, hotel, office room, and storeroom to prevent the dust, mosquito and warm air, and so on.

2. IDENTIFICATION & INSTALLATION DIMENSIONS

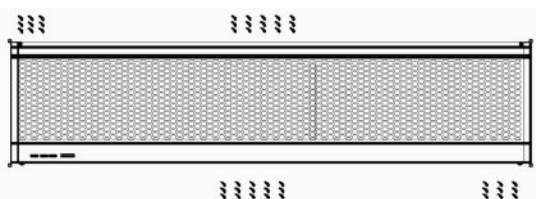


| MODEL | A | B | C | D | E | F | G | H | I |
|--|------|-----|-----|-----|----|-----|-----|-----|----|
| Basic plus 90cm Basic plus 90cm BLK | 900 | 740 | 370 | 370 | 64 | 119 | 185 | 187 | 71 |
| Basic plus 100cm Basic plus 100cm BLK | 1000 | | | | | | | | |
| Basic plus 120cm Basic plus 120cm BLK | 1200 | | | | | | | | |
| Basic plus 150cm Basic plus 150cm BLK | 1500 | | | | | | | | |
| Basic plus 180cm Basic plus 180cm BLK | 1800 | | | | | | | | |
| Basic plus 200cm Basic plus 200cm BLK | 2000 | | | | | | | | |

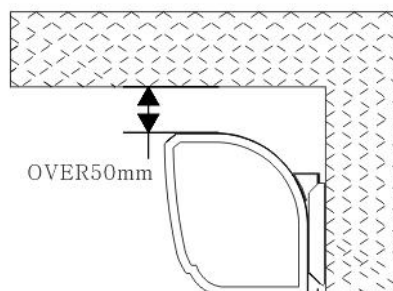
3. INSTALLATION CAUTION

Before installation, please apply the same voltage and frequency, then follow the below requests when install the air curtain :

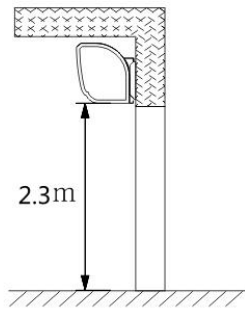
3.1 Please install the unit in a sturdy place to avoid the shaking and ensure its security (because it maybe causes the wall becoming flexible or shaking and noising.)



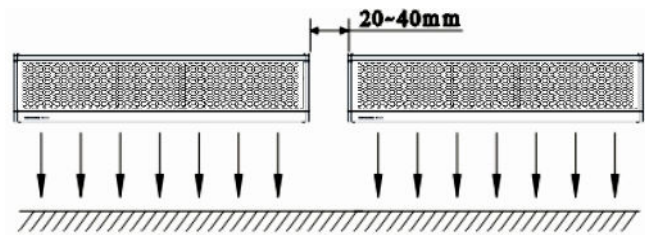
3.2 Please install the unit inside the room.



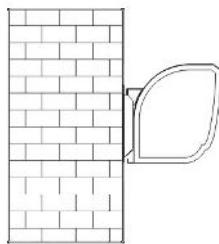
3.3 Don't install the unit too low, no less than 2.3 meters from the ground.



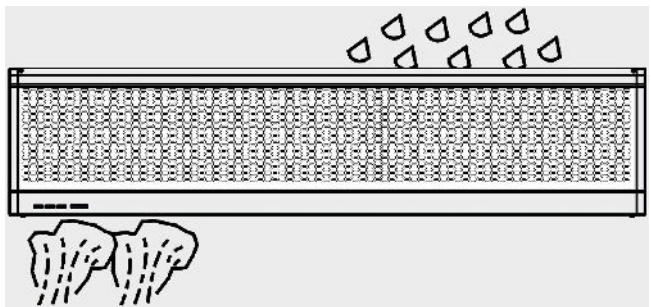
3.4 When the entrance is wider than the unit, it is recommended to install two or more units in parallel. In this case, provide 20-40mm gaps between the units.



3.5 Don't allow gaps between the unit and the wall. When hanging it from the ceiling, purchase the extra ceiling brackets.



3.6 Don't install the unit in a place where it is splashed by water, exposed to excessive steam, explosive gas or corrosive gas.

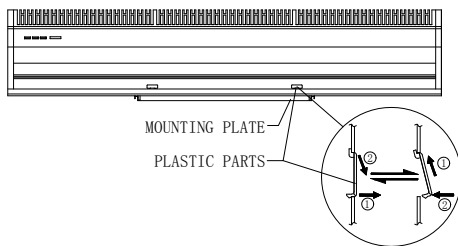


4 . INSTALLATION

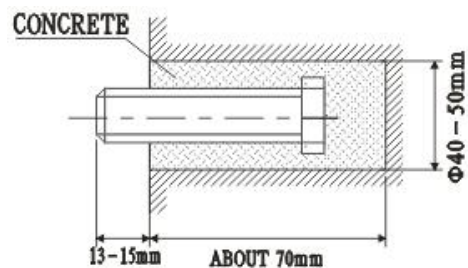
A. Installing on the concrete wall:

4.1.1 Removed the mounting plate

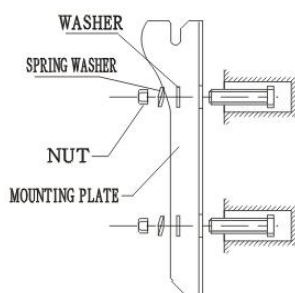
Remove the plastic parts, unclamping the fixed screws on the back of main body to remove the mounting plate.



4.1.2 Fix the bolts in the proper position (fix the position with the mounting plate and pour cement into the bolt holes.)

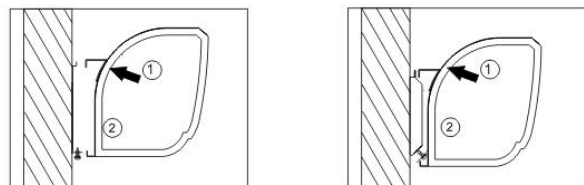


4.1.3 When the cement has freeze, fit the mounting plate (use the washer and nut according to the following)



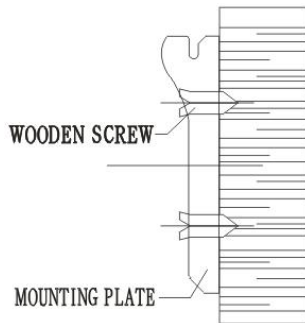
4.1.4 Install the main body

Set the main body onto the upper end of the mounting plate, and clamp it as below. Make sure it's well fixing

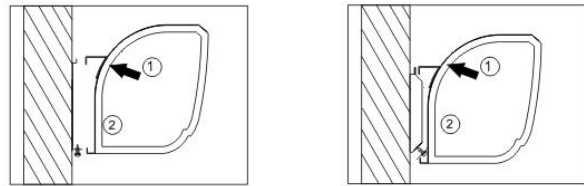


B. Installing on the wooden wall

4.2.1 Fix the mounting plate in the proper positions with tapping screw.

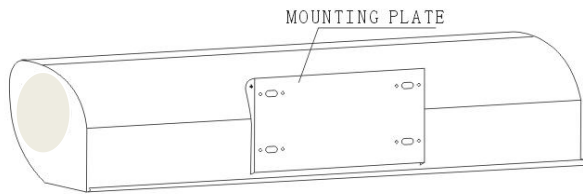


4.2.2 Same as the step 4.14.

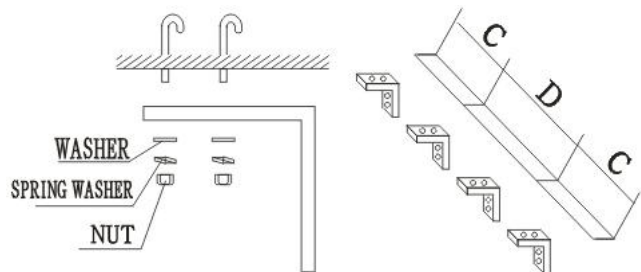


C. Hanging from the ceiling

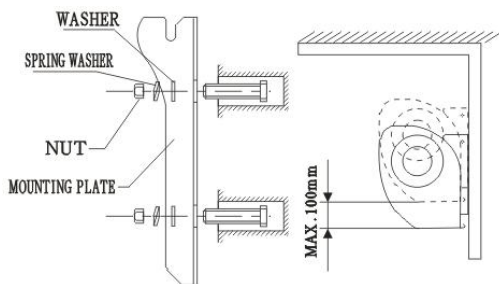
4.3.1 Remove the mounting plate from main body (Same as step 4.1.1)



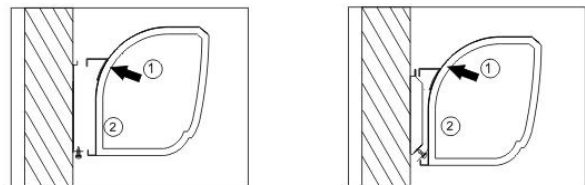
4.3.2 Fixing ceiling brackets as Fig.



4.3.3 Set the mounting plate on the ceiling brackets and ensure safety & fixing (use the bolts attached to the ceiling brackets as Fig. Using the ceiling brackets to hang from the ceiling, the position of mounting plate can be adjusted in the limit of 100mm.

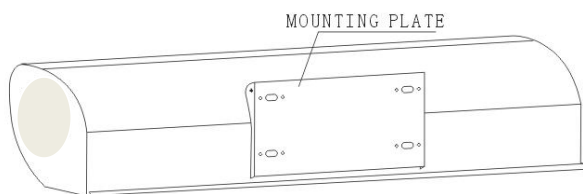


4.3.4 Do the same as step A to install the main body.

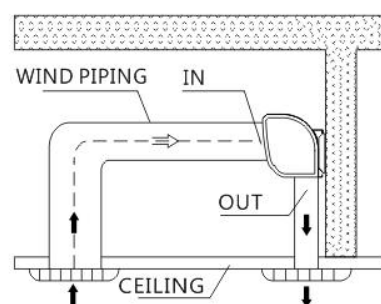


D. For above ceiling

4.4.1 Fix the air curtain as in the procedure for installing on the concrete wall.



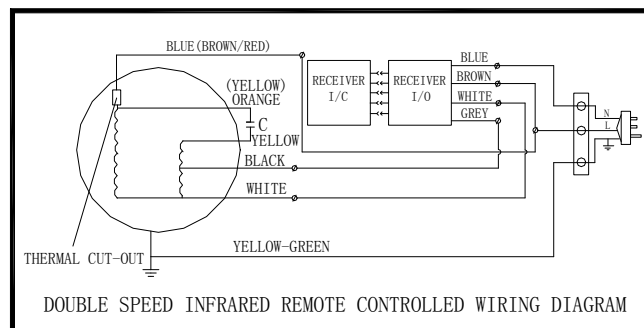
4.4.2 Then install the pipe as below.



5. TECHNICAL PARAMETER

| MODEL | Volt. (V~) | Freq (Hz) | Max input power (W) | | Max air speed (m/s) | | Air volume (m ³ /h) | | Noise (dB) | | Net weight (Kg) | | | | | |
|--|---------------|--------------|------------------------|-----|------------------------|---|-----------------------------------|------|---------------|----|--------------------|---|----|------|----|----|
| | | | H | L | H | L | H | L | H | L | | | | | | |
| Basic plus 90cm Basic plus 90cm BLK | 220- 240 | 50 | 160 | 110 | 11 | 9 | 1400 | 1100 | 57 | 55 | 8.5 | | | | | |
| Basic plus 100cm Basic plus 100cm BLK | | | 180 | 130 | | | 1600 | 1300 | 58 | 56 | | 9 | | | | |
| Basic plus 120cm Basic plus 120cm BLK | | | 200 | 150 | | | 1900 | 1600 | 58 | 56 | | | 10 | | | |
| Basic plus 150cm Basic plus 150cm BLK | | | 230 | 180 | | | 2500 | 2000 | 59 | 57 | | | | 11.5 | | |
| Basic plus 180cm Basic plus 180cm BLK | | | 300 | 250 | | | 3200 | 2600 | 60 | 58 | | | | | 13 | |
| Basic plus 200cm Basic plus 200cm BLK | | | 350 | 300 | | | 3600 | 2900 | 61 | 59 | | | | | | 14 |
| | | | | | | | | | | | | | | | | |

6. ELECTRIC WORK



7. OPERATION

- 6.1 Turn on the power switch
- 6.2 Select the air speed: High[H], Low[L]
- 6.3 According to the installation place to adjust the wind direction parts to obtain the best effect.

8. CAUTIONS

- a). Use the unit at the rated voltage and frequency indicated on the nameplate.
- b). Disconnect power source before unit servicing. Ensure that the fan is switched off from the supply mains before removing the guard.
- c). Routine maintenance must be done every year.
- d). Never use petrol, benzene, thinners or any other such chemical for cleaning the unit.
- e). Don't allow water or any liquid to enter the motor.
- f). When power supply comes from a socket, the plug must be in accordance with IEC335-1. When the power cord is connected directly, all polarity switches that the contact gap is 3mm at least must install in the charging line.
- g). In order to avoid injure, must changed the line of air curtain by professional worker or factory when the line happened trouble.

ATTENTIONS:

1. These Instructions shall be provided with the appliance so that the appliance can be used safely.
2. The specific instructions related to the safe operation of this appliance shall be collated together in the front section of the user instructions.
3. These instructions shall also be available in an alternative format, e.g. on a website.
4. This appliance can be used by children aged from 8 years and above and persons with reduced physical, sensory or mental capabilities or lack of experience and knowledge if they have been given supervision or instruction concerning use of the appliance in a safe way and understand the hazards involved
5. Children shall not play with the appliance. Cleaning and user maintenance shall not be made by children without supervision.
6. If the supply cord is damaged, it must be replaced by the manufacturer, its service agent or similarly qualified persons in order to avoid a hazard.