



EBB-100 N



EBB-170 N
and EBB-250 N

2
SPEEDS

3
SPEEDS

The EBB-N extractor fans are suitable for many domestic and commercial ventilation applications where higher system resistance pressures are encountered. The range comprise of three models, EBB-100N, EBB-170N and EBB-250N, each available in different versions. The EBB-N models incorporate a forward curved centrifugal impeller with 2-speed (EBB-100 N) or 3-speed (EBB-170 N / EBB-250 N), single phase motor 230V50Hz, 4-pole (EBB-170N and 250N) or 2-pole motor (EBB-100N). IP44. Class II. Housing and impeller made in polypropylene. Suitable to operate with air temperature up to 40°C.



Filters

Two metal filters (inox for models 170 and 250) that keep out dust and dirt in the exhaust.



Back draft shutter

The EBB-N are fitted with an automatic back draft shutter to prevent air entry and limit heat leakage when the extractor is not operating.



2 Back draft shutter

2 back draft shutter of Ø80 and Ø100 mm.



FEATURES

EBB-100 N	S	T	H
2 BACKDRAUGHT SHUTTERS	●	●	●
FILTER	●	●	●
TWO SPEED MOTOR	●	●	●
ADJUSTABLE RUN-ON-TIMER		●	●
INTERNAL HUMIDISTAT			●
WIRING DIAGRAM*	7, 8, 9, 10	4, 5	1, 4

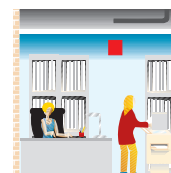
EBB-170 N / EBB-250 N	S	T	H
BACKDRAUGHT SHUTTER	●	●	●
INOX FILTERS	●	●	●
THREE SPEED MOTOR	●	●	●
ADJUSTABLE RUN-ON-TIMER		●	●
INTERNAL HUMIDISTAT			●
2-POSITION INTEGRATED SWITCH		●	●
WIRING DIAGRAM*	53, 54, 57	4, 5	1, 4

*See section of Wiring Diagrams.

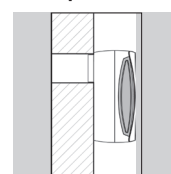


Forward curved centrifugal impeller

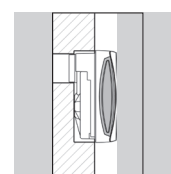
To deliver high performance with a minimum noise level against high static pressure system resistance.



Examples of installation



Surface



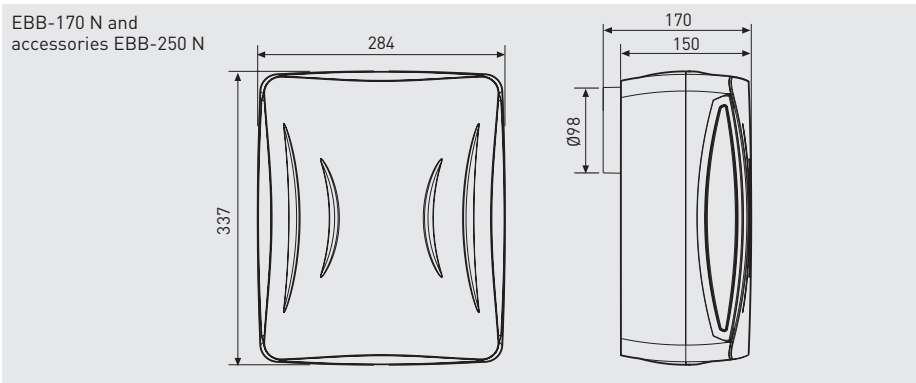
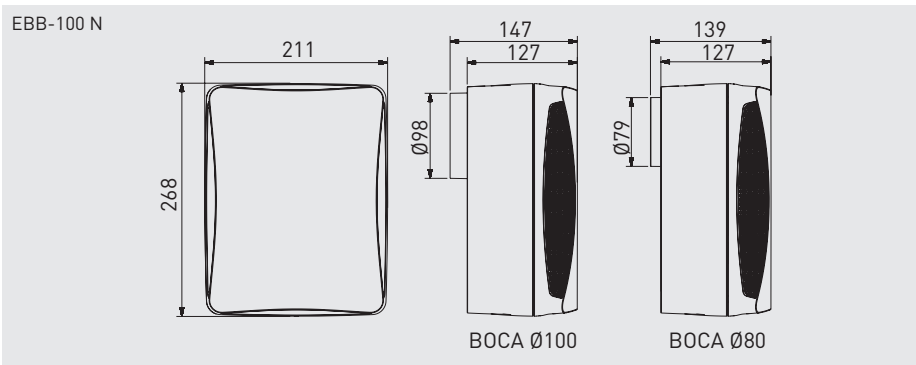
Built-in

TECHNICAL CHARACTERISTICS

Model type	Speed (rpm)	Maximum power absorbed (W)	Maximum current absorbed (A)	Maximum air volume (m³/h)	Sound pressure level* (dB(A))	Insulation IP	Ø duct (mm)	Weight (kg)	Wiring diagram** (n°)
EBB-100N	HS 1500	29	0,13	110	44	Class II/IP44	100/80	1,8	57
	LS 1040	15	0,06	70	34				
EBB-170N	HS 1120	48	0,23	230	43	Class II/IP44	100	3	57
	MS 850	38	0,16	160	37				
EBB-250N	HS 1240	53	0,23	280	46	Class II/IP44	100	3	57
	MS 990	41	0,17	210	36				
	LS 930	31	0,13	140	37				

* Sound pressure level measured at 1,5 m at the inlet, in free field conditions.
** See section of Wiring Diagrams.

DIMENSIONS (mm)



ACCESSORIES



GSA-100
Flexible aluminium ducting.



GRA-70
Aluminium external grille.



MRT-100
Circular duct joining piece.



CX-80/125
Worm drive ducting clip.



REB
Single phase electronic speed controllers.



REGUL-2
Two speed switch.

PERFORMANCE CURVE

