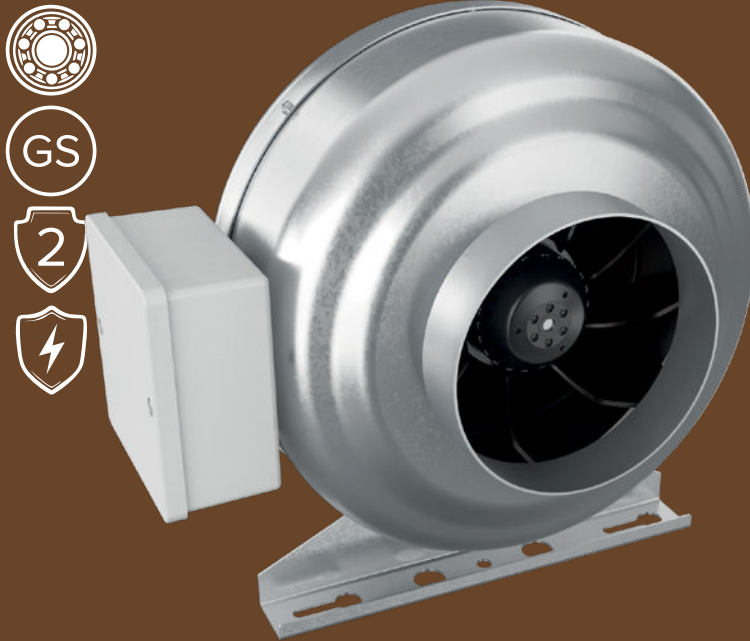


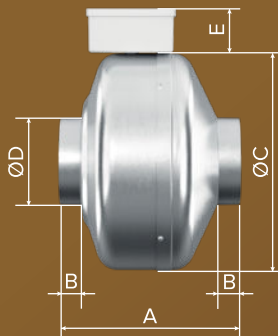
TORNADO EBM Line of fans



- > Inline centrifugal fans in galvanized steel casing.
- > Designed for supply and exhaust ventilation systems.
- > Waterproof terminal box IP55.
- > Single-phase ball bearing motor of external rotor type is equipped with a centrifugal impeller with backward curved blades. It is implemented with overheat protection with automatic restart.
- > Equipped with an impeller with plastic blades.
- > Designed for inline mounting into air ducts of the appropriate size. Can be installed into any point of the ventilation system and at any angle.
- > Wall and ceiling mounting is carried out using special holding brackets.
- > Speed regulation is available. Smooth or complicated speed control is carried out using a thyristor or autotransformer speed regulator. Several fans can be connected to one and the same speed-controller, provided that their total power and operating current do not exceed the rated speed controller parameters.
- > Ingress protection rating for the electrical equipment is IPX4, for the motor — IP44.

Dimensions

Article	A	B	C	D	E
TORNADO EBM 100	194	23	243	100	55
TORNADO EBM 125	195	27	243	125	55
TORNADO EBM 150	222	23	333	150	55
TORNADO EBM 160	222	25	333	160	55
TORNADO EBM 200	223	24	333	200	55
TORNADO EBM 250	230	27	333	250	55
TORNADO EBM 315	228	25	402	315	55



Technical specifications

Specifications	TORNADO EBM						
	100	125	150	160	200	250	315
Diameter, mm	100	125	150	160	200	250	315
Power consumption, W	44	46	89	98	134	176	256
Capacity, m ³ /h	250	350	560	700	940	1060	1700
Pressure, Pa	357	327	400	450	511	615	735
Noise Level, dB(A)	50	50	58	59	64	57	66
Current consumption, A	0,24	0,24	0,39	0,39	0,61	0,95	1,02
Rotation frequency, Rpm	2565	2488	2602	2537	2621	2603	2645



Capacity diagram

