

# TYPHOON 100 2SP



Axial inline mixed-flow fans are designed for supply-exhaust ventilation systems of residential, public and industrial buildings.

Fan's body, a central part with the motor, impeller and implemented terminal box, is detachable and allows easy maintenance. It is fastened to the nozzle parts with hose clamps.

Two-speed fans. The speed is controlled with cable switching inside the terminal box or with a traditional switch button (supplied with the device).

Asymmetric design of the terminal box ensures easy mains cable connection.

Two-speed single-phase ball-bearing motor with an extended service life.

Cutout overheating protection and automatic reset.

Horizontal and vertical installation.

Fastening to the mounting surface is done with screws.

## Basic options



Ball-bearing motor



Ingress protection rating for electrical equipment



Speed-switch button



2 speeds



Cutout overheating protection



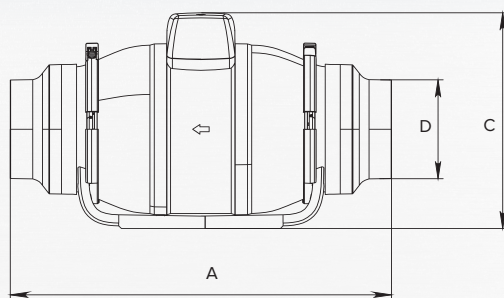
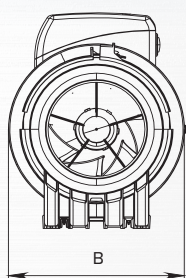
Warranty

## Additional option



Timer

## Overall dimensions

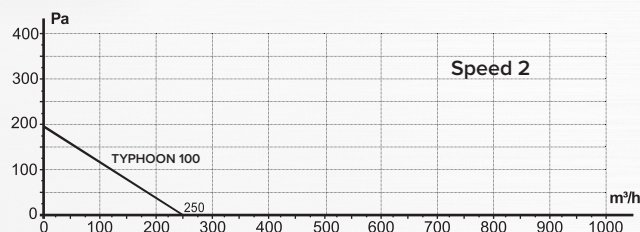
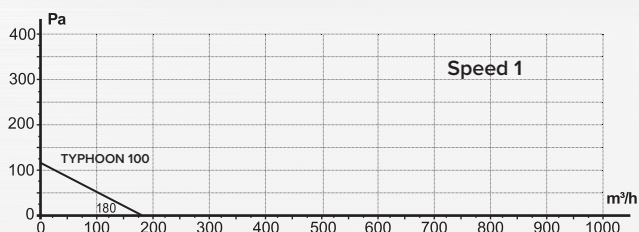


Item code	A	B	C	D
TYPHOON 100 2SP	371	173	216	99

## Technical specifications

Specifications	Hz	TYPHOON 2SP	
		100	100
Power consumption, W	L2	50	25
	L1	50	23
Capacity, m <sup>3</sup> /h	L2	50	250
	L1	50	180
Pressure, Pa	L2	50	190
	L1	50	110
Noise level, dB(A)	L2	50	40
	L1	50	31
Current consumption, A	L2	50	0,11
	L1	50	0,10
Rotation frequency, RPM	L2	50	2500
	L1	50	1850

## Capacity diagram



# TYPHOON 125 2SP



Axial inline mixed-flow fans are designed for supply-exhaust ventilation systems of residential, public and industrial buildings.

Fan's body, a central part with the motor, impeller and implemented terminal box, is detachable and allows easy maintenance. It is fastened to the nozzle parts with hose clamps.

Two-speed fans. The speed is controlled with cable switching inside the terminal box or with a traditional switch button (supplied with the device).

Asymmetric design of the terminal box ensures easy mains cable connection.

Two-speed single-phase ball-bearing motor with an extended service life.

Cutout overheating protection and automatic reset.

Horizontal and vertical installation.

Fastening to the mounting surface is done with screws.

## Basic options



Ball-bearing motor



Ingress protection rating for electrical equipment



Speed-switch button



2 speeds



Cutout overheating protection



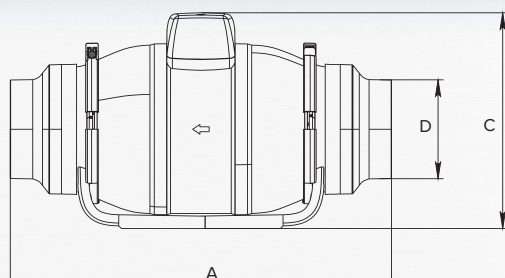
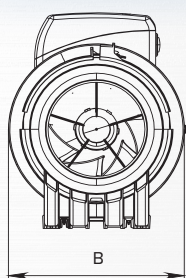
Warranty

## Additional option



Timer

## Overall dimensions

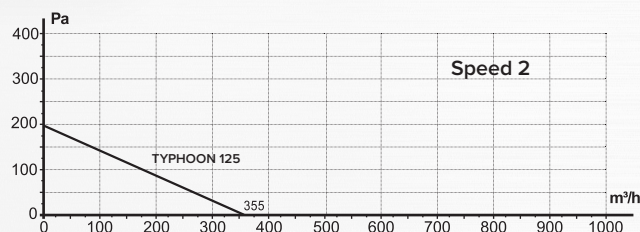
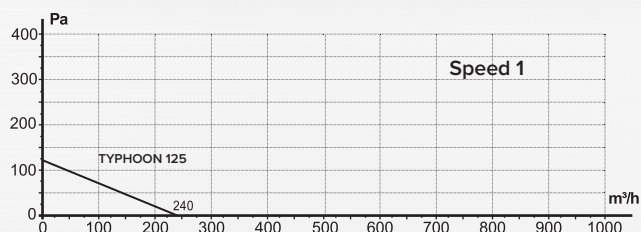


Item code	A	B	C	D
TYPHOON 125 2SP	291	173	216	124

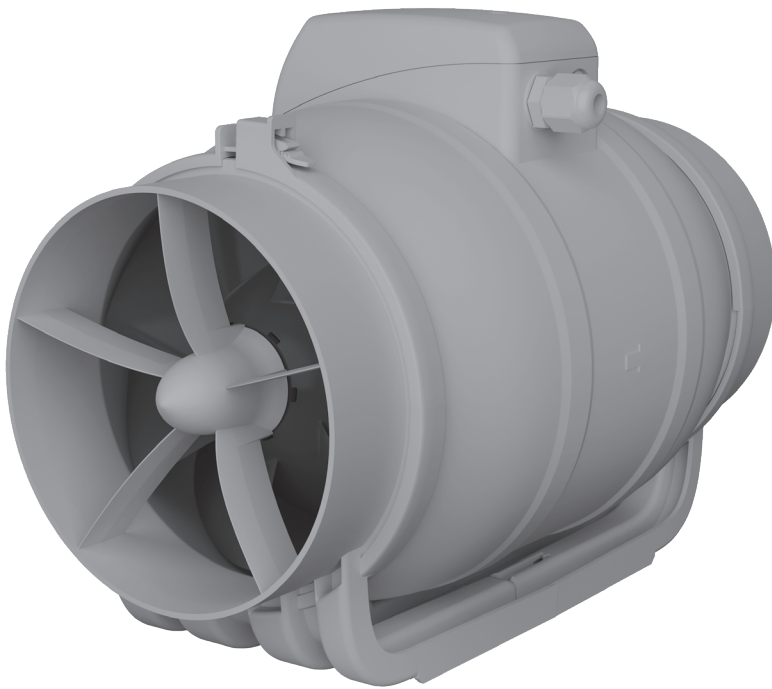
## Technical specifications

Specifications	Hz	TYPHOON 2SP	
		125	2SP
Power consumption, W	L2	50	29
	L1	50	25
Capacity, m <sup>3</sup> /h	L2	50	355
	L1	50	240
Pressure, Pa	L2	50	190
	L1	50	110
Noise level, dB(A)	L2	50	39
	L1	50	30
Current consumption, A	L2	50	0,13
	L1	50	0,11
Rotation frequency, RPM	L2	50	2450
	L1	50	1800

## Capacity diagram



# TYPHOON 150 2SP



Axial inline mixed-flow fans are designed for supply-exhaust ventilation systems of residential, public and industrial buildings.

Fan's body, a central part with the motor, impeller and implemented terminal box, is detachable and allows easy maintenance. It is fastened to the nozzle parts with hose clamps.

Two-speed fans. The speed is controlled with cable switching inside the terminal box or with a traditional switch button (supplied with the device).

Asymmetric design of the terminal box ensures easy mains cable connection.

Two-speed single-phase ball-bearing motor with an extended service life.

Cutout overheating protection and automatic reset.

Horizontal and vertical installation.

Fastening to the mounting surface is done with screws.

## Basic options



Ball-bearing motor



Ingress protection rating for electrical equipment



Speed-switch button



2 speeds



Cutout overheating protection



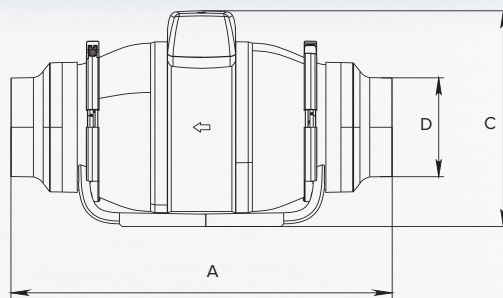
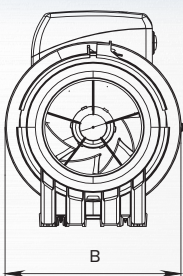
Warranty



Timer

## Additional option

## Overall dimensions

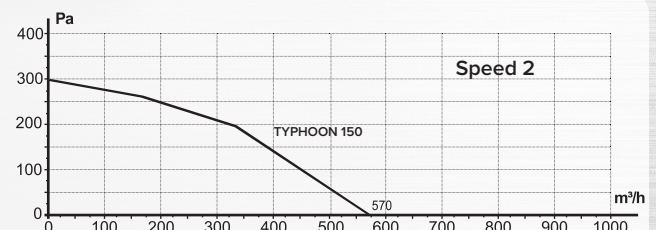
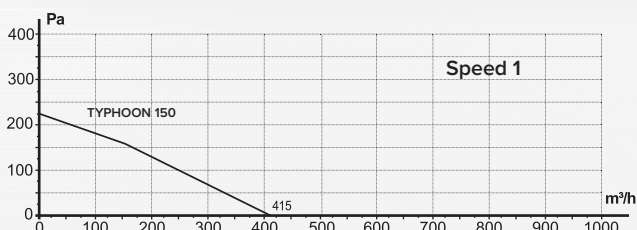


Item code	A	B	C	D
TYPHOON 150 2SP	323	190	238	149

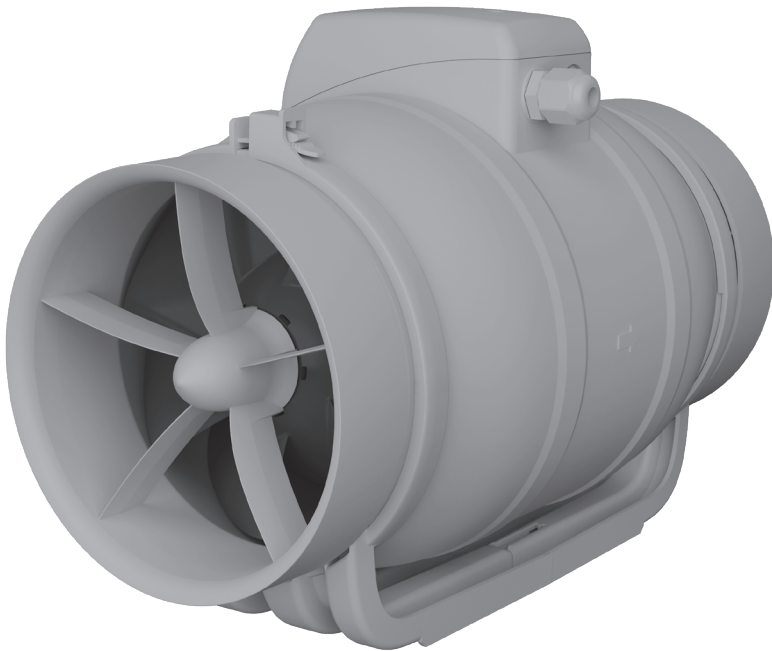
## Technical specifications

Specifications	Hz	TYPHOON 2SP	
		150	150
Power consumption, W	L2	50	50
	L1	50	42
Capacity, m <sup>3</sup> /h	L2	50	570
	L1	50	415
Pressure, Pa	L2	50	305
	L1	50	225
Noise level, dB(A)	L2	50	49
	L1	50	40
Current consumption, A	L2	50	0,22
	L1	50	0,18
Rotation frequency, RPM	L2	50	2600
	L1	50	2000

## Capacity diagram



# TYPHOON 160 2SP



Axial inline mixed-flow fans are designed for supply-exhaust ventilation systems of residential, public and industrial buildings.

Fan's body, a central part with the motor, impeller and implemented terminal box, is detachable and allows easy maintenance. It is fastened to the nozzle parts with hose clamps.

Two-speed fans. The speed is controlled with cable switching inside the terminal box or with a traditional switch button (supplied with the device).

Asymmetric design of the terminal box ensures easy mains cable connection.

Two-speed single-phase ball-bearing motor with an extended service life.

Cutout overheating protection and automatic reset.

Horizontal and vertical installation.

Fastening to the mounting surface is done with screws.

## Basic options



Ball-bearing motor



Ingress protection rating for electrical equipment



Speed-switch button



2 speeds



Cutout overheating protection



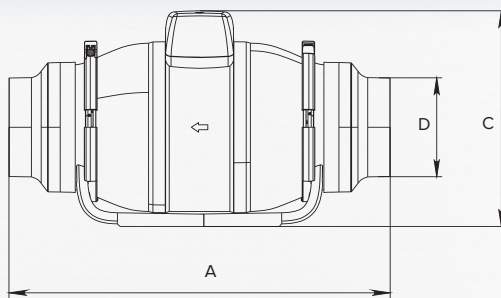
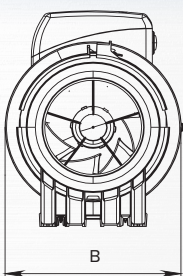
Warranty



Timer

## Additional option

## Overall dimensions

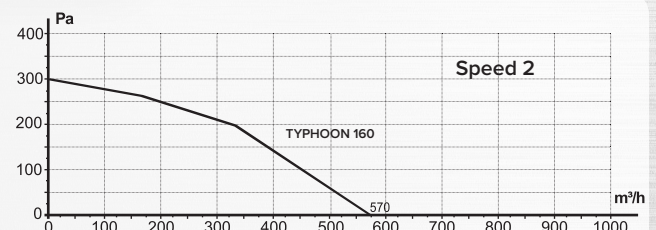
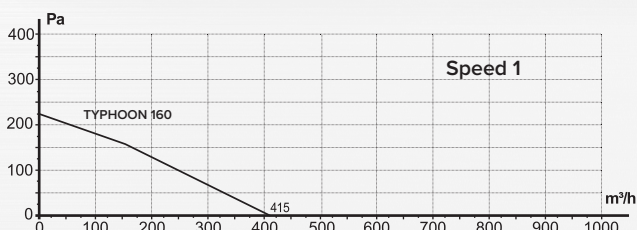


Item code	A	B	C	D
TYPHOON 160 2SP	340	190	238	159

## Technical specifications

Specifications	Hz	TYPHOON 2SP	
		160	
Power consumption, W	L2	50	50
	L1	50	42
Capacity, m <sup>3</sup> /h	L2	50	570
	L1	50	415
Pressure, Pa	L2	50	305
	L1	50	225
Noise level, dB(A)	L2	50	49
	L1	50	40
Current consumption, A	L2	50	0,22
	L1	50	0,18
Rotation frequency, RPM	L2	50	2600
	L1	50	2000

## Capacity diagram



# TYPHOON 200 2SP



Axial inline mixed-flow fans are designed for supply-exhaust ventilation systems of residential, public and industrial buildings.

Fan's body, a central part with the motor, impeller and implemented terminal box, is detachable and allows easy maintenance. It is fastened to the nozzle parts with hose clamps.

Two-speed fans. The speed is controlled with cable switching inside the terminal box or with a traditional switch button (supplied with the device).

Asymmetric design of the terminal box ensures easy mains cable connection.

Two-speed single-phase ball-bearing motor with an extended service life.

Cutout overheating protection and automatic reset.

Horizontal and vertical installation.

Fastening to the mounting surface is done with screws.



Ball-bearing motor



Ingress protection rating for electrical equipment



Speed-switch button



2 speeds

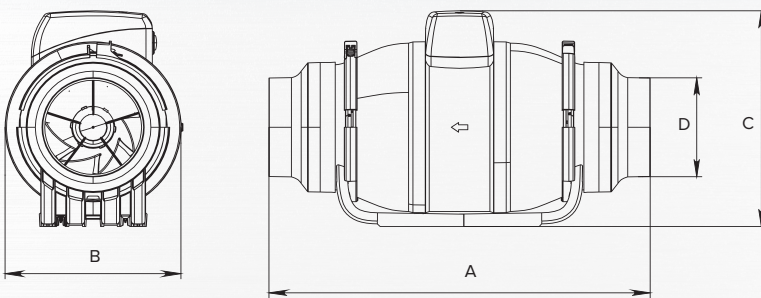


Cutout overheating protection



Warranty

## Overall dimensions

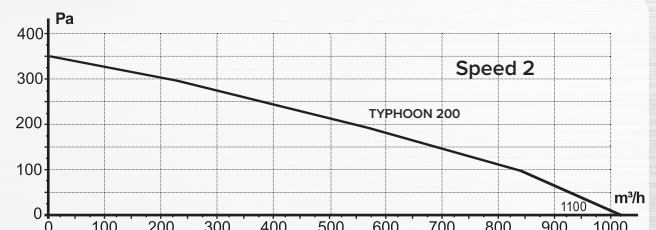
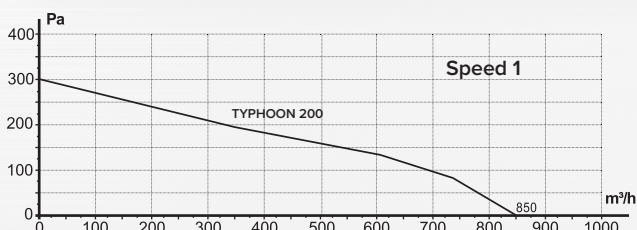


Item code	A	B	C	D
TYPHOON 200 2SP	376	250	267	198,5

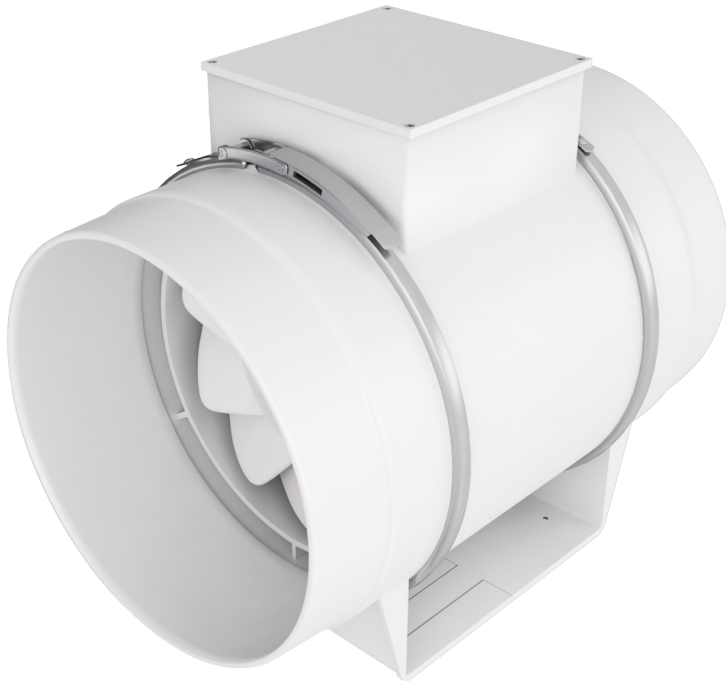
## Technical specifications

Specifications	Hz	TYPHOON 2SP	
		L1	L2
Power consumption, W	50	105	75
	50	1100	850
Capacity, m <sup>3</sup> /h	50	350	300
	50	58	50
Pressure, Pa	50	0,51	0,42
	50	2600	2250
Noise level, dB(A)	50	2600	2250
	50	2250	
Current consumption, A	50		
	50		
Rotation frequency, RPM	50		
	50		

## Capacity diagram



# TYPHOON 250 2SP



Inline mixed-flow fans are designed for supply-exhaust ventilation systems of residential, public and industrial buildings.

Two-speed fans. The speed is controlled with cable switching inside the terminal box or with a traditional switch button (supplied with the device).

Two-speed single-phase ball-bearing motor with an extended service life.

Cutout overheating protection and automatic reset.

Horizontal and vertical installation.

Fastening to the mounting surface is done with screws.

TYPHOON 250 2SP is equipped with metal hose clamps.



Ball-bearing motor



Ingress protection rating for electrical equipment



Speed-switch button



2 speeds

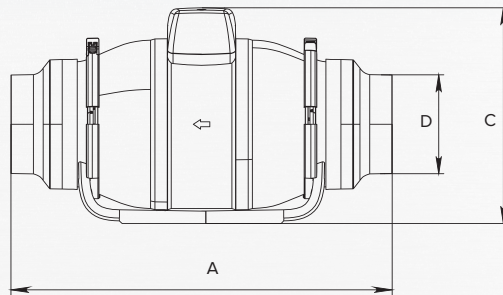
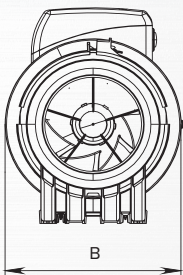


Cutout overheating protection



Warranty

## Overall dimensions

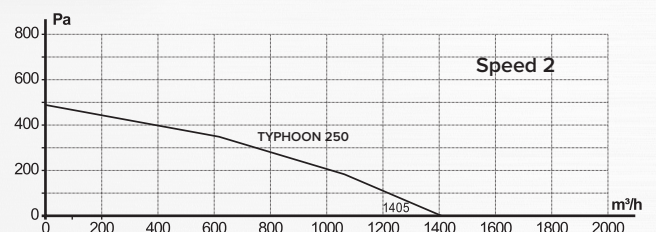
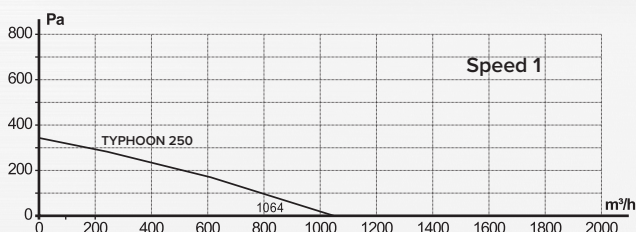


Item code	A	B	C	D
TYPHOON 250 2SP	383	310	261	247

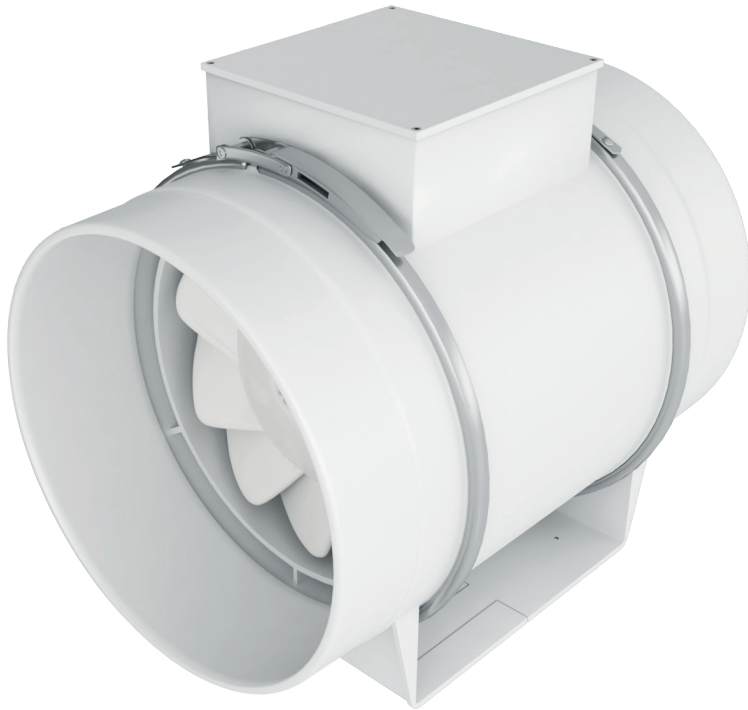
## Technical specifications

Specifications	Hz	TYPHOON 250	
		L1	L2
Power consumption, W	L2	50	225
	L1	50	165
Capacity, m <sup>3</sup> /h	L2	50	1405
	L1	50	1064
Pressure, Pa	L2	50	488
	L1	50	371
Noise level, dB(A)	L2	50	66
	L1	50	58
Current consumption, A	L2	50	1,2
	L1	50	0,75
Rotation frequency, RPM	L2	50	2450
	L1	50	1850

## Capacity diagram



# TYPHOON 315 2SP



Inline mixed-flow fans are designed for supply-exhaust ventilation systems of residential, public and industrial buildings.

Two-speed fans. The speed is controlled with cable switching inside the terminal box or with a traditional switch button (supplied with the device).

Two-speed single-phase ball-bearing motor with an extended service life.

Cutout overheating protection and automatic reset.

Horizontal and vertical installation.

Fastening to the mounting surface is done with screws.

TYPHOON 2SP 315 is equipped with metal hose clamps.



Ball-bearing motor



Ingress protection rating for electrical equipment



Speed-switch button



2 speeds

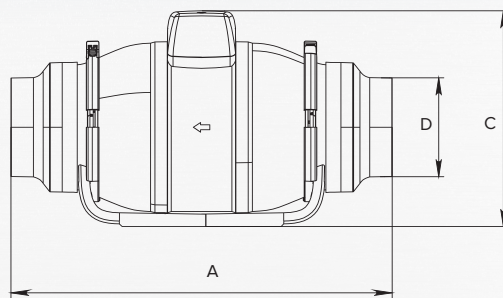
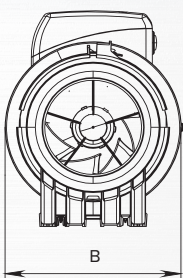


Cutout overheating protection



Warranty

## Overall dimensions



Item code	A	B	C	D
TYPHOON 315 2SP	446	386	325	312

## Technical specifications

Specifications	Hz	TYPHOON 2SP	
		315	
Power consumption, W	L2	50	285
	L1	50	215
Capacity, m <sup>3</sup> /h	L2	50	2060
	L1	50	1650
Pressure, Pa	L2	50	715
	L1	50	480
Noise level, dB(A)	L2	50	69
	L1	50	61
Current consumption, A	L2	50	1,24
	L1	50	0,93
Rotation frequency, RPM	L2	50	2350
	L1	50	1900

## Capacity diagram

